

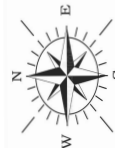
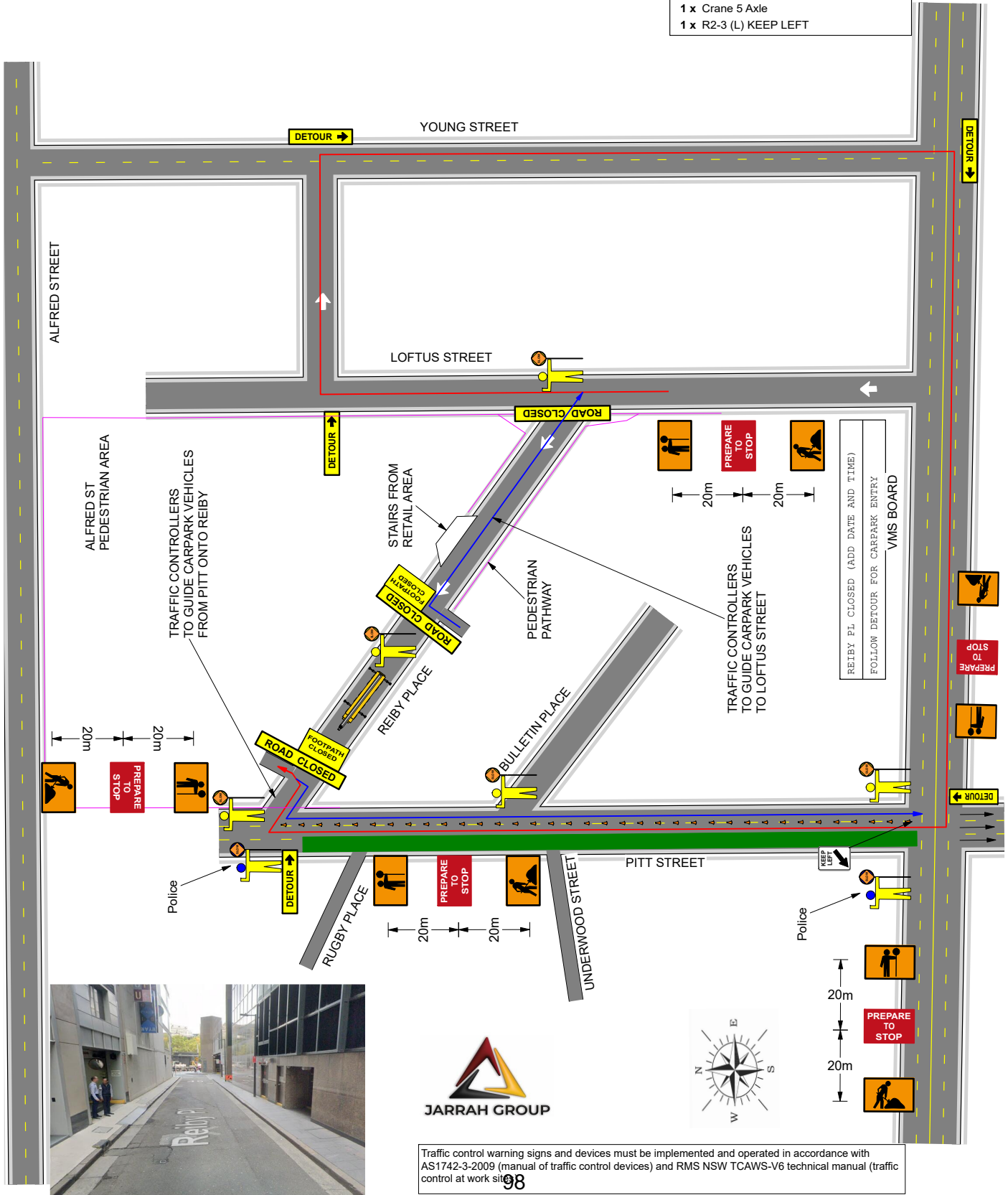
Date: 17/01/2023 Author: STEVE SPITERI-TCT1025690 Project: REIBY PLACE CLOSURE

Comments:

- FOOTPATH CLOSURE - PEDESTRIANS MANAGED BY ONSITE STAFF
- FULL REIBY PLACE ROAD CLOSURE - DETOUR IN PLACE
- LOCAL ACCESS GRANTED TO CARPARK ENTRIES
- MOBILE CRANE WORKS

Manifest

- 36 x Cone
- 5 x Flagger
- 5 x T1-18 PREPARE TO STOP
- 5 x T1-34 TRAFFIC CONTROLLER AHEAD
- 5 x T1-5 WORKERS AHEAD
- 5 x T5-1 (R) DETOUR LEFT
- 4 x ImSTRAIGHTARROW
- 3 x T2-4 ROAD CLOSED
- 2 x T8-4 FOOTPATH CLOSED
- 1 x Crane 5 Axle
- 1 x R2-3 (L) KEEP LEFT



Traffic control warning signs and devices must be implemented and operated in accordance with AS1742-3-2009 (manual of traffic control devices) and RMS NSW TCAWS-V6 technical manual (traffic control at work site) 98